



the **REAPER**

VOL. 67, NO. 4
Winter 2022

70
YEARS

ANNIVERSARY

**GREAT IS THY
FAITHFULNESS**

OFFICIAL PUBLICATION OF SOURCE OF LIGHT INTERNATIONAL MADISON, GA

Source of Light Ministries International is an independent, faith mission that exists to bring people of every nation, language, and ethnicity into a mature relationship with Jesus Christ and into fellowship with a local church family.

SLM is a world-wide, disciple making, church planting ministry that uses the medium of Bible lessons for all ages in both printed and electronic format to achieve its goals. The International Headquarters in Madison, Georgia, its Discipleship Training Branches (DTB), and Associate Discipleship Schools (ADS), distribute lessons throughout the world.

Representatives and Missionaries of SLM are available to present the ministry to churches, missionary conferences, and other groups. Contact the **SLM PR OFFICE** for scheduling.

For information visit us at:
www.sourcelight.org
or call **800.776.1207**

the REAPER is published by Source of Light Ministries International, Inc. and is free of charge to subscribers. Write or call to be placed on the mailing list.

Change of Address or Subscription

If your address has changed or you are no longer interested in receiving **the REAPER**, please contact us using the postal or email address on the back cover of this magazine.

Copyright © 2022

Source of Light Ministries International, Inc.
1011 Mission Road, Madison, Georgia 30650

All rights reserved including the rights to reproduce this publication or any parts thereof in any form without the express written permission of Source of Light.

Printed in the United States of America, October 2022

the REAPER

Dr. Ronald J. Barnes Jr.
Editor

Brenda Barnes
Assistant Editor

Eula Keener
Melody Zink
Betty Ingalsbe
Kimberly Thigpen
Ray Walker
Shirley Rice
Reaper Staff

Joel Cockrell
Graphic Designer
Ron Barnes III
Photographer
Michael Ventrello
Prepress

Board of Directors

Dr. Paul Seger, *Chairman*
Dr. R.J. Sans, *Vice Chairman*
Jim Thompson, *Secretary*
Darwin Blandon, *Treasurer*
E.B. Shoff
David Meyer
Steve Woody
Dr. B.H. Struthers
Doug Truax
Jay Reber

Administrator's Cabinet

Dr. Ronald J. Barnes Jr.
President & CEO
Brian Thigpen
Chief Financial Officer
Phil Winder
Director of Operations
Dr. Ronald J. Barnes Jr.
Director of Global Outreach
Bruce Dare
Director of Publications
Brian Thompson
Regional Director - North America
Pablo Correa
Regional Director - South America
Scottie Staab
Regional Director - Europe & Asia



TABLE OF CONTENTS

4 Great Is Thy Faithfulness	23 70 Years of Volunteers
5 Where We Are Going	26 The Next 70 Years and You
10 SLM Branch History	28 Prayer
14 Gifts of Faith	29 Praise
18 God's Faithfulness	31 Memorials



On the Cover

Nadiia Vynar
Great Is Thy Faithfulness

Corrections & Clarifications

For the latest version of **the Reaper** go to sourcelight.org/reaper

GREAT IS THY FAITHFULNESS

A letter from the Editor

Faith

It was by faith that Source of Light had its humble beginnings. Two men had a vision and a passion for lost souls, but a bigger vision to see those souls disciplined. It was really the “Great Commission” that compelled those two, their wives, and their families to leave everything behind and follow Him.

It was by faith that others joined in the task year after year, now for 70 years. Many left lucrative and dependable means of income for a life of missions service never to look back, only forward through faith... and prayer.

Faithful

In spite of seasons of trials, uncertainty, and scarcity, Source of Light and its missionaries stayed the course. They endured wars, persecution, financial crises, staffing shortages, mechanical issues, beatings, kidnappings, false accusations, testimony slander... and through it all SLM and our missionaries remained faithful.

Faithfulness

But without the faithfulness of God, 70 years of ministry would not have been possible. Were it not for His mercy, His grace, His compassion every single morning all these years, sustaining us through trials, renewing us through times of weariness, blessing us beyond what we deserved, SLM could never have seen the fruit of millions of people saved and disciplined, thousands of new churches established, and hundreds of millions of lessons produced.

It was God’s faithfulness, the faith and faithfulness of SLM’s missionaries, and your faithful prayer and support of this ministry that SLM not only still exists, but thrives strong as a ministry, and continues to inspire and produce offshoots around the world.

This edition of the Reaper is dedicated to all those counted among the faithful in the ministry of Source of Light International, and will tell just a few of their stories.



After years of serving as a church planting missionary, **Dr. Ronald J. Barnes Jr.** now serves as the President & CEO for SLM.

Follow me  @RonBarnesJr

WHERE WE ARE GOING

Ron Barnes

New Literature and Resources

By now, most of you are aware that we have initiated a plan for developing new literature. While God has used greatly the literature that we have utilized for many years now, we also know a lot in the world has changed. The Gospel, no! The culture and the challenges many are facing, yes!

In the early days, we had no idea that the materials would be used in so many different cultures. When they were being written, not much thought about addressing the needs of different cultures went into them.

Having a long history of ministry and experience behind us now, we have had the advantage of decades of cross-cultural ministry insights from cross-cultural workers. That has put SLM in a position to write curriculum that will span across cultures, not identifying a specific culture either in the writing or in the illustrations.

We started with the children’s curriculum, which is now nearly complete with four children’s age groups that have gone through line edits, cultural edits, and are soon to be illustrated.



Mozambique – Pastor Paulo Naene – in process of becoming a SLM Branch — Photo by Ron Barnes

We will next work on creating youth and adult curriculum in the same vein, utilizing our current courses, but creating new courses to better round out our discipleship and Bible courses into a more thorough and organized curriculum.

The next phase will include specialty tracks that will address things like ministry to prisoners, truck drivers, soldiers, etc., addressing specific needs for those who may have unique life issues or challenges with reading. Simpler, large print, even audio delivery methods will be introduced to make our courses more accessible and available.

Then, the final phase will be to offer additional resources, tied to our print or online discipleship courses, but designed to “fill in the blanks” with downloadable resources online. From deeper and further explanations of Bible terminology and truths to lessons dealing with various topics in the Christian’s life, we want to have an answer to wider and deeper questions than the limitations of the printed booklet give adequate time towards.

Our World Wide Bible Institute and the Ezra Institute will also expand, with new classes and languages, some very soon!

This is a massive undertaking, but we want SLM to be seen as the “go-to place” for Christian evangelism, discipleship, in-depth Bible study, and Christian life resources.

Branches

The byproduct of a discipleship ministry has been disciples touched by the ministry and then seeking to continue their cycle of discipleship by perpetuating it in their own countries as SLM missionaries. A distinguishable movement of just such missionaries has begun and we are in the process of sorting through the possibilities. These are coming at a rate faster than we are currently adequately resourced for financially and administratively.

But in the near future, we could easily see Portugal, Italy, Ireland, Sweden, Honduras, Cuba, Uruguay, Mozambique, Zambia, Burkina Faso, Benin, South Korea, Malaysia, and East Timor become official branches. These are more than just possibilities, they are probabilities, so we eagerly await God’s timing and provision.

Broader Vision

When I started as the President of SLM, many were eagerly awaiting some sort of drastic change at SLM. There certainly were changes, but

none of them significantly changed the vision of SLM. If anything, they just enhanced the vision.

I remember one of my first weeks in the office, I wrote something for the *Reaper* and one of the editors commented on my article, “You do know we aren’t a church planting agency, right?” I responded that maybe they hadn’t realized it, but we have been church planting for decades. In fact, I discovered over time that we have been, and continue to be, significantly involved in church planting. A board member, who is also the president of a large church-planting mission agency, often says, “SLM has started more churches by accident, than my mission has started on purpose.”

I will never publicly correct my elder, but it isn’t by accident. We just believe it’s a necessary step in the process of true discipleship. So, the future of SLM will continue to broaden, but mostly in the sense of giving more training, direction, and depth to the type of ministries we are currently in. It’s worked for 70 years, and we have faith it will continue another 70 by God’s grace and through His faithfulness.



After years of serving as a church planting missionary, **Dr. Ronald J. Barnes Jr.** now serves as the President & CEO for SLM.

Follow me  @RonBarnesJr



Recollections of SLM’s founders, from an article in the *Reaper* in 1967

“PRINCIPLES IN GOD’S LEADING”

The passing of time has a dramatic way of changing one’s perspective, and I have become very conscious of this as I have reflected on the early days of the Source of Light Mission, and especially as I have reviewed my own role in those events.

Although the day-to-day activities were considered to be under God’s control, their successful consummation seemed to depend a great deal on the dedication and ability of those who were involved. These activities did not appear at that time to be necessarily interrelated, but were rather ends within themselves.

Now, however, events of those early years seem to be very definitely interwoven. And the role of all of us who were involved appears to be less significant in the light of an apparent working out of an overall divine plan. Isolated events and situations that then appeared to be individual hurdles to be cleared, now appear to have been related situations that established the pattern for SLM’s ministry through the years.

Charles Gilmore and I went to Jamaica to distribute Gospels of John that were already there waiting, having been prayed in and provided through Cam Thompson. We were immediately concerned that there was no follow-up of those who received the Gospels. As we prayed, we felt that this could be best accomplished through a Bible correspondence course in the absence of a corps of field workers to do personal follow-up. The cults were very effectively using Bible correspondence courses in this way.

We were unable to locate a Bible course that we felt would meet the particular need that we envisioned. Therefore, we decided to write one ourselves. Several efforts were scrapped, and the course that we finally developed was a simple course on the way of salvation in the Gospel of John, which was based principally on an outline taken from the Christian



George Webster and Family in the 80's

Worker's New Testament. Since many of those who received the Gospel of John would have only that portion of Scripture, the course was limited to that Book. Our goal was to lead those who took the course to a saving knowledge of Jesus Christ. The course was written, five hundred copies were mimeographed, and Charles and I left for Jamaica. With the help of George DaCosta, a Jamaican (or rather we helped him), the Gospels were distributed. An announcement was included in each Gospel offering a free Bible correspondence course to anyone who would send in the coupon. Bette and Eleanor (our wives) had stayed

at home and sent out the courses as the requests came in. By the time Charles and I returned home, all of the first five hundred courses had been sent out and there were five hundred requests waiting. By the time those requests were filled, the first courses were back, asking for the next course that had not yet been written.



SLM Founders and Early SLM Staff

All of these events seemed to transpire as a natural course of events. We simply entered into opportunities as they developed. Although we had adopted the name Source of Light Mission (taking the name from a radio broadcast that Charles and Bette Gilmore had in Pennsylvania before moving to Georgia), we had not at this time, as I recall, set out to start a mission. We had just responded to Cam Thompson's plea for help in distributing Gospels and following up the contacts that developed through the distributions. The tremendous response to the Gospel distribution and the recurring requests for other

courses kept pushing us into a continuing and expanding ministry. It seemed apparent that what we had rather innocently, if I may use the term, "blundered" into, had very rapidly developed into a ministry that was far beyond the capabilities of the two couples with which it had started. We then sought the help and guidance of others. A council was formed, including Brother E. C. Sheehan and Cam Thompson, and the mission was officially incorporated. The work developed like a spiral, with one event growing out of another and continuing right on to its present world-wide outreach through the Bible correspondence courses in many different languages.

The first Bible correspondence courses were almost solely Scripture. The Scripture speaks for itself. I often heard Cam Thompson say that no better tract has ever been written than the Gospel of John; so why not concentrate our efforts in getting a Gospel of John to every person as quickly as possible? Cam's motto, "God's Word to every home in Latin America with a MAXIMUM of prayer and a MINIMUM of red tape," was an outgrowth of this conviction. God has greatly used His Word in the courses. Because of their strong biblical basis, the courses have had wide appeal and wide usage by many groups, crossing many denominational bounds, because the Bible is not a sectarian book.

At perhaps no time was it more apparent that this work was of the

Lord and not of man than when both of the founding families were taken out of the work and yet it continued to grow, perhaps even with greater strides than before. But the principles under which SLM would operate were established in those very early years, often by circumstances engineered by the Lord Himself. Adherence to the principles set by the Lord in the beginning of the work is probably one of the principle keys to the phenomenal growth of the Mission through the years. Faithful adherence to these principles in the years ahead will guarantee that the Source of Light Mission will continue to grow as it has in the past and give an increasing light in the darkness ahead.

God has used many people in providing for His work through SLM and for those who have been associated with SLM through the years. Each one has learned dependence upon Him out of sheer necessity. Most of the time there was no other option. Praise the Lord for the circumstances which He engineers and for His great faithfulness in those circumstances not only to supply our needs, but to teach us utter dependence upon Him for His provision and direction.

From the Archives of SLM

SLM BRANCH HISTORY

1952 – Georgia: SLM vision started in Madison.

1958 – Guatemala: Branch started and cared for hundreds of students through associate schools (ADSs).

1960 – Jamaica: The Kingston Branch started with Charles Gilmore as Director. Soon it was turned over to George Webster, who led the organization in founding six Christian bookstores and leading many to know Jesus as their Savior. Joy, his wife, was interim director after his passing until John MacFarlane took over in 2021. The Branch is involved in Bible correspondence and has a Christian bookstore in the city.

1971 – Guyana: Miss Emily Chung became the first National Director in 1971. Winston Abel, who served with her in the ministry, became the acting Director when she passed away. In 2020, Dwayne Daniels became the Discipleship Training Branch Director who is currently in leadership and is serving five Associate Discipleship Schools.

1975 – Mexico: David and Rosita Beam started the Branch followed by Manuel and Ruth Lopez. In 2022, Rosa Santiz became the Branch director. The Branch is involved in Bible correspondence and contacting local churches to use SLM material.

1975 – Peru: Earl & Adele Newell started the Branch and in 1978 Pablo Correa became National Director until 2022. Enrique Machado took the leadership and became the National Director in April 2022. The Branch is involved in

Bible correspondence, discipleship for children and discipleship for adults in local churches, prisons, and rehabilitation center ministries. They have 34 active ADSs.

1978 – Chile: Earl & Adele Newell started the Branch in 1978, and Guillermo Salazar became National Director in 1979. He and his wife Vicky continue serving in the Branch leadership. They are involved in evangelism and discipleship ministries. They now have seven active ADSs.

1979 – SLM India: Started by Pramod Das in 1979. Since that time the ministry has grown into five branches.

1979 – New Mexico: In 1979, BIBLE STUDIES BY MAIL, INC. (BSBM) was started by George & Mary Baker. In 2005 Darryl Evans became the Director. The work of SLM New Mexico's correspondence lessons has steadily grown through word of mouth and BSBM's website. While approximately 95% of the lessons are mailed to a US address, the rest are sent to places overseas like England, Scotland, Ireland, Italy, Israel, and Sri Lanka.

1980 – Philippines: Dr. Luz D. Nacionales founded the Branch which is now led by Dr. Nestor Serrano. The "PhilSOL" team covers 11 regions of the Philippines. They have ministries focused on correspondence, church planting, prison ministry, adult Bible studies, and missions.

1980 – India, Orissa: S. Prahan started with SLM in Cuttack doing training, tailoring ministries (business as

missions), and working among the "neighbors'."

1981 – India, Central Zone: D. Wilson started working with Source of Light in the city of Hyderabad. Since then, D. and his dear wife have developed ministries like church planting, discipleship, correspondence, seekers conferences, Bible study fellowship groups, and tribal ministry outreach.

1982 – India, South Zone: Since 2007, H. and A. Peter continued the ministry of H's father in the city of Bangalore. They have ministries covering a wide variety of disciplines: correspondence, the Tabernacle ministry (evangelism and Christian education through a historical journey through the Tabernacle), social media and radio teaching, orphan ministry, and church planting.

1982 – Brazil: Eugene Bunt and Bruce Russell established the Brazil SLM Branch. Samuel Milanez became the National Director in 2018. Source of Light Brazil has 121 Associate Discipleship Schools. They support local churches in evangelism and discipleship through the Source of Light courses.

1982 – Florida: Started by Brother Eifert then taken over by Doug Starkweather.

1985 – Korea: Led by Paul Bahn with many churches reaching both North and South Korea.

1986 – Kansas: The ministry began in 1986 through Herman Klaassen. The current Director is Leon Scott. They have been blessed to be involved in Bible correspondence in English and Spanish, prison ministry, camp ministry, and sharing in mission conferences and churches.

1987 – Liberia: Johnny and Janice Connelly, SLM American Missionaries,

started the work in Liberia. When they left in 1996, they turned the ministry over to national leadership. In 2014, Nelsen Cyrus was appointed the National Director. He and his wife operate a school to help support their ministry and they use the Source of Light lessons as part of their curriculum. Nelsen also pastors Seedtime Community Church.

1989 – India, North Zone: This ministry is directed by Sanjeeb and Anita Sahu, who serve their local community, New Delhi, through a slum ministry, Train up the Child, health education, correspondence, church planting, and leadership training extends their ministry into missions in Northern India and Nepal.

1990 – Romania: The Romanian ministry was started by Pavel Greucean and carried on by Cristian and Rodica Oprea from the city of Brasov. They are involved in correspondence, ministry to prisoners and refugees, and have a vision to start a Christian Chemical Dependency Treatment center.

1991 – Kenya: Earl and Adele Newell started the work in East Africa. Also key to the success of Source of Light's work in East Africa are Mr. and Mrs. Jack Stiles and Mike Titus, who were active in leadership before our current Director, Timothy Kyuli. SLM Kenya is highly active serving local schools with the Bible lessons. They serve tens of thousands of school students each year.

1994 – Colorado

1995 – Alabama

1995 – Japan: Pastors Koji Yamazoe and Takuji Yamazaki began the vision of SLM Japan. God has opened the doors for them to serve in the ministries of correspondence, church planting,

discipleship, prison ministry, and an international church.

1996 – India, Northeast Zone: K. and S. Jena started a work with SLM in Calcutta. Since that time, God has developed through them a ministry of evangelism, discipleship, preaching, teaching, “neighbors” (Muslims), slum ministry, youth ministry, and children’s ministry in nine provinces of India.

1996 – Singapore: Florence Lim is involved in correspondence, local church ministry, foreign missions in the Filipino slums, and discipleship.

1996 – Ghana: The SLM Branch was started by Daniel Sappor, the current Director. The work operates two offices, one in Accra and another in Tamale. They have several full-time workers who serve 150 Associate Discipleship Schools. The SLM courses are used in homes, schools, churches, and prisons. SLM Ghana is also involved in church planting and providing education to children in rural areas.

1996 – Ivory Coast: Ministry began under the direction of an American missionary, then was turned over to national leadership, Johnson Bello, in 1999. Bello died in late 2011, and Isaiah Bernasko, a previous board member, became the Director. Isaiah is passionate about discipleship and evangelism through the Source of Light Bible studies. He pastors a church and is overseeing several new church plants. He and his wife are caregivers at an orphanage, and he has been faithful to disciple some of these children to become active in ministry themselves.

1996 – Bolivia: Paul Rustine established the Branch in 1996 and was Director until 2003 when Miguel Sanchez became the National Director. They are involved in prisons, camps,

vacation Bible schools, and adolescent confinement house ministries. They currently have 35 ADSs.

1996 – South Africa: Fanie Buys started the ministry. He advertised in the newspaper and had an overwhelming response from people who were interested in taking Bible lessons. They currently have four Associate Discipleship Schools and have been able to provide Mozambique, a neighboring country, with lessons as well.

1997 – Heartland (Midwest Branch)

1998 – Haiti: Randy Christopher started the work. The Branch grew out of correspondence that was done by two of the women at the home office, Florence Houck and Naomi Ammann. It is currently headed up by Claudy Jean-Baptiste, the Director since 2012. The Branch is involved in Bible study, evangelism, Bible classical school, children’s ministries, Sunday schools, and prison ministry.

1998 – Togo: Sika Yawo became the National Director in 2003. The national office is in the capital city of Lome. The primary focus is winning lost souls and discipling them through the SLM Bible lessons. They have planted four churches, have ministries in 12 prisons, and are in more than 40 schools. They minister to the military and operate an orphanage called “The Joseph Project.”

1998 – Uganda: Aloni Wandeeke established the Uganda Branch followed by James Byakika, who has served as Director since 2016. SLM Uganda is involved in preaching, teaching, evangelism, assisting converts facing opposition, prison ministry, church ministry and school ministries. They have 130 Associate Discipleship Schools.

1999 – Nigeria: The SLM Nigeria Branch began under the leadership of Sanya Dosunmu in Lagos. In 2006, Sanya took over the kingship of his tribe and relocated the SLM office to Abeokuta. Sanya passed away in 2021 and his wife, Bosun, became the acting Director at that time. The DTB in Nigeria has eight Associate Discipleship Schools and serves thousands of students each quarter.

1999 – Argentina: The Branch was established by Jorge Ovando in Lujan. Since April 2022, Carlos Aranguren has led the Branch. He is a pastor and church planter, works with ADSs, and runs a rehabilitation center.

2002 – Alaska: Established by Don and Rose Nabinger with schools reaching into the interior.

2002 – Democratic Republic of the Congo: Brian and Gwenda Trapp established the ministry of Source of Light in the D.R. Congo. On April 3, 2002, the ministry became a Branch and Vedette Nlandu appointed Director. The D.R. Congo has five Associate Discipleship Schools, one of which is in the neighboring country of Brazzaville, Congo. They distribute the Bible lessons through a dedicated team of volunteers.

2005 – Myanmar: Philip Thang is the founder and is involved in orphan ministry, correspondence, church planting, missions, Associate School development, and music ministry.

2005 – Ethiopia: Started by Haile Tefera, their ministry involves open air evangelism, publications, schools, and evangelism.

2005 – Canada: Joe Homontowski began the Canada Branch in 2005. They supply lessons and encouragement to those who use our lessons in Canada.

They do Bible correspondence and support ministries like home schools and area churches. The lessons go into Hutterite, Mennonite, and Amish communities. The Branch is located in Hepburn, Saskatchewan, Canada.

2008 – Jamaica: Don Schiffer became the Director of Follow the Source, SLM’s Branch in Western Jamaica. They have been useful in delivering and grading lessons for school students. They house and equip short-term mission teams and support the local church discipleship program.

2009 – Indonesia: Purwoko Arsito started the ministry in Solo City and is active in correspondence, overnight pastors’ prayer meetings, church encouragement, blind ministry, youth ministry, children’s ministry, adult Bible study, and radio ministry.

2014 – Pakistan: M.B. and his wife start the work. Through M.B.’s work in Faisalabad. Through M’s work, God has started ministries of correspondence, church planting, orphan care, prison ministry, village ministry, Hope children’s school, evangelism and “neighbors” ministry.

2019 – Colombia: The Branch was established in 2019 by Gilberto, Sandra, and Laura Vanegas. They are serving the Lord in discipleship for adults and children through local churches, rehabilitation centers, prisons, and homeschooling ministries. They have 32 ADSs.

2022 – Spain: Jorge Vecchiarelli started the Branch in March 2022 and continues to serve as its Director. They are involved in discipleship with churches and prisons, and already have contact with several Spanish-speaking churches in Italy, Germany, and Portugal.

GIFTS OF FAITH

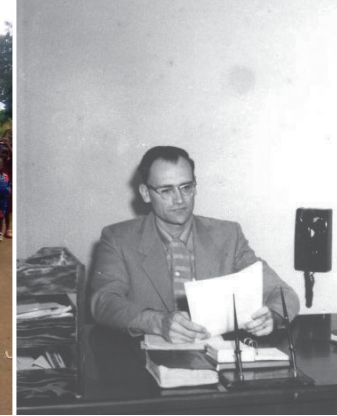
By Danielle Dare

From left to right:

Sometimes people are led into ministry through “a sign.”
—Photo by Bruce Dare

Children learning of the importance of being saved at Iki-iki school in Uganda. —Photo by James Byakika

Soon to be named General Director of Source of Light Ministries, Glenn Dix. —Photo by SLM archives



For it is God which worketh in you both to will and to do for his good pleasure (Philippians 2:13).

This is the verse that replayed over and over in my mind as I spoke with a few of Source of Light’s faithful donors recently. God accomplishes His will in the world, but He uses obedient people to give of their time, skill, and resources to complete the work.

Ed was in the automobile business, attending his local church’s mission conference, when he first heard about Source of Light through Glenn Dix, who was serving as director at the time. That night, he also learned that Glenn was having car trouble and offered to fix the missionary’s car. A decision to do what he could to help began a friendship lasting decades as well as a long-term ministry partnership. The more that Ed said yes to God, the more he loved the work that God was doing through Source of Light: equipping the people on the field and developing Bible

lessons in more languages. He says of himself and his wife, “it became the most important thing in our lives.” Ed pointed out to me the value of sustaining redemptive relationships in ministry, through good times and challenges, with a commitment to the work that God is completing.

Randall was just a boy when he first learned about Source of Light! The church his family attended sent groups of volunteers to help out at the mission, and he remembers going along with his parents, leaving a lasting memory in his mind. Years later, as an adult, he learned of the great needs in Uganda, especially for children. God stirred in his heart to give out of his resources to reach children in Uganda with the Gospel. As he searched for a ministry to partner with, God brought Source of Light to His mind, and he committed to be a part of what God is doing through the Source of Light lessons! The seeds that God planted in Randall’s heart when he was just a boy are now being harvested across the world in the salvation of boys and girls in Uganda.

“We can’t always see it, but God is working all the time,” shared Glen and Lawania, a couple who were introduced to Source of Light around 40 years ago. Convinced of this truth, they live their lives continually listening for God’s voice and are committed to obey whatever He asks them to do. Motivated by the legacy of Abel as recorded in Hebrews 11:4—“Abel offered to God...And through his faith, though he died, he still speaks”—this couple chooses to invest in God’s work, and as they perfectly stated, know what they have contributed to will continue to bear fruit long after they are called home to Heaven. For them, the decision to partner with Source of Light is a simple matter of stewardship. They have seen the faithfulness of God over the years to use Source of Light’s discipleship materials to reach countless people in the far corners of the world.

The testimonies of these few faithful supporters represent the legacy that has made the work of Source of Light possible over the last 70 years and

is what will carry it into the future until Christ returns. Huge steps of faith are often preceded by everyday decisions to follow in obedience that to some seem insignificant. Coupled with a church hosting a missionary conference, I see a decision of an individual to show up to those meetings. When a man has a heart to give toward global outreach, I see a mom and dad including their children in volunteer opportunities. When the choice is made to invest in eternity with resources of time and money, I see a prior commitment to listen to God’s voice and respond to each need as He calls. God is working; He is looking for willing helpers to say yes in ways simple or great.



Danielle Dare is married to Bruce, Director of Publications at SLM. She spends her time caring for their three children and assists at the mission as she is able.

THE PRINTED WORD... STILL CHANGING LIVES, CONSIDER BECOMING A PAPER PARTNER!



Weighing up to **1,100** pounds, an **\$800** roll of paper yields **18,000 to 20,000** Bible lessons. A **\$50** box of digital quality paper can produce about **1,250** Bible lessons. Source of Light material is used in Christian and secular schools, church planting, Bible studies, and even prisons around the world. Translations include languages such as French, Spanish, Tagalog, Hindi, and Japanese among several others available in Madison and abroad.

One of SLM's goals is to enable our international missionaries to produce the lessons on their own soil. However, many cannot because of the high cost of paper. Your generous gift will reach people in the US and overseas.

Consider a donation with the ultimate return on investment ...
...an investment which yields eternal results!

Become a paper partner today, go to
sourcelight.org/donate



GLOBAL OUTREACH FUND



Source of Light International in Madison, Georgia operates and ministers to each of its missionaries without any administrative fees charged. We rely solely on gifts and regular donations in the same way as any of our missionaries, purely by faith. In order to continue to operate this way, we are asking God, by faith, to raise up new individuals, churches, and foundations to support the work of the home office through the Global Outreach Fund.

**Would you prayerfully consider partnering with
SLM through the Global Outreach Fund?**

GOD'S FAITHFULNESS OVER 70 YEARS TO SOURCE OF LIGHT MINISTRIES

By Ray Walker

Proverbs 29:18 says, "Where there is no vision, the people perish." I am thankful that God raised up a man of vision and prayer, with a heart for missions, Cam Thompson. God used this man to cast the vision for Source of Light Mission.

I am thankful for the Faithfulness of Charles Gilmore and Ed Steele, who caught the vision and ran with it. They did this at great sacrifice to themselves and to their families. At one point, they were seen picking up pecans to sell to buy a loaf of bread. I am thankful for all who caught the vision to come alongside those early servants, as well as those over the years who joined the ministry, some for a short time and some for many years. I am thankful for God's faithfulness to raise up donors to support the ministry, and each of the missionaries He called to be a part of this ministry.

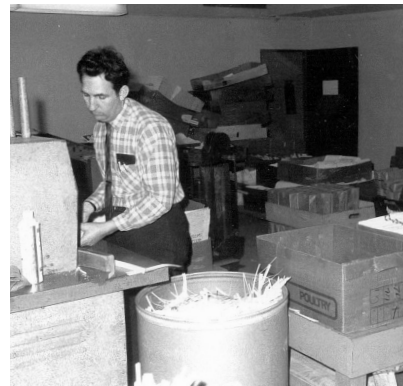
I am thankful for God raising up the Dix family to be a part of this work

and to continue with the vision when the founders were no longer able to do so. Brother Glenn Dix was the General Director of Source of Light from 1963 to 2002. Then 10 years later, God in His faithfulness brought Glenn's grandson, Ron Barnes, to carry the torch of the leadership of the ministry.

I am thankful to the Lord for bringing me and my family aboard in late 1961 to become a vital part of the team, as I became the number two man alongside Brother Dix for those years he served as Director, having the oversight of both the finances and the literature ministry. Together Glenn and I developed the literature policies of operation, as I timidly made decisions on how to handle each request for literature, once I was given the responsibility for it.

I am thankful for God raising up the Weyman Carmichael family, who gave the land for Source of Light to establish its headquarters, gave the loan of funds to buy the first printing equipment, and eventually cancelling the loan.

I am thankful that Source of Light was established on the Word of God



A younger Ray Walker operating the three-knife trimmer in the old print shop.

— Photo by SLM archives

and in prayer. I am grateful that the ministry of the mission has continued to center around the Word of God and getting it to as many people as possible both for evangelism and for discipleship. Each step of growth for the ministry was bathed in prayer and was a distinct step of faith. Whether it was for a new typewriter, mimeograph machine, automatic typewriter, printing press, skid of paper, later on a truck load of paper, or addition to the building, it was all bathed in prayer.

Charles Gilmore in his ingenuity, made a machine that would bring a line of lessons to the stitcher which stapled the books as they went through. After years with Dottie Jackson using volunteers to flip open the freshly printed unfolded lesson sheets so others, including staff children, could put them on the belt that would bring them to her to stitch (staple), we decided we had found just the collator stitcher to replace all



A volunteer feeding the homemade collator line as Dottie Jackson operates the stitcher to make booklets.

— Photo by SLM archives

of that. I had reluctantly agreed with the decision, although the Lord had not given me total peace about it. So, we prayed and took the step of faith to make it happen. It was a two-pocket feeder attached to a two-headed stitcher, along with a 10-pocket collator. To do most of our books we had to run them through the collator before we ran them through the collator stitcher. Richard Beam was used of God to take two pockets off the collator and join them on with the two pockets attached to the stitcher, thus giving a four-pocket collator and stitcher. This worked, after a fashion, as it was still very finicky to run, with a great many stalls, as it took a very light touch to put the signatures in the pockets of this gravity-fed machine. Later there was an upgrade to that, which God provided. Glenn and I went to look at a collator stitcher trimmer that was being replaced. We were delighted at what it could do for us, and at the price of \$6,000, which we trusted the Lord for.



Walker family — Photo by SLM archives

We also prayed for each new staff member, as we were very short of staff. Sometimes it was years before God provided what or who we were praying for, but even though it was a LMD (last minute deliverance), He always was faithful. I would often think that there were lots of people better trained for what I was doing, but they were not here. I concluded that God wanted things done the way I was doing them, until He provided those who could do it better.

I praise God for raising up George Eager and The Mailbox Club with the vision to prepare simple Bible lessons for all ages. With them preparing materials and Source of Light printing for them and for us, we were able to have a tremendous worldwide outreach with God's Word.

In the earlier days, we only had a couple of Branch offices, so we developed a large network of Associate Discipleship Schools. These would get material from us to grade

and handle with their own contacts and students. We developed guidelines for these ADSs so the Order Department could approve those that fell within those guidelines without me working directly with them. We often furnished the materials to these schools without charge to them, but they had to handle them at their own expense and with their own personnel.

After our children were grown, my wife Peggy was able to take over the Order Department which she handled for 40 years with others God provided. This took a tremendous load off me. Betty Ingalsbe, my secretary for 42 years, was the other part of the team and a tremendous help in caring for the correspondence and secretarial duties. If I looked like I was doing a good job in my responsibilities, I give a great deal of credit to these two faithful ladies.

God's hand in faithfulness was very much in view over these past 70 years of ministry, for which we give Him all the glory and praise.



Ray Walker served at Source of Light for 60 years as Director of Ministries and CFO, also writing and editing for the Reaper as well as SLM tracts and lessons.

LOOKING FORWARD WITH FOUNDATIONS

By Bruce Dare

Being very much from New Jersey, moving to Georgia has most definitely been a cross-cultural experience, though perhaps not quite Abraham's living "as in a foreign land" like a traditional missionary might do. All of us at SLM Headquarters live with this tension, being so connected to worldwide missions yet still "home" in the United States. This is actually a significant factor that led my family here and part of the beauty of Source of Light, that we can serve so many of the nations all at once. Without the support and grounding of Headquarters, our Branches around the globe could not be built, let alone remain or flourish.



SLM staff tending to equipment mid-1970s: folders, collator, stitcher, trimmer, etc.

— Photo by SLM archives

Even from the start, SLM has had the identity of a "discipleship school." That initial effort was intended to act as a home office for the distant island of Jamaica, but what became Madison Discipleship School continued to be the core of the ministry. Methods have been further defined and refined, discipleship by simple sequence and relay relationship but now managed by a powerful framework. The group of students multiplied more than tenfold over decades, leading to the development of a tracking program that can group students by code/region and manage statistics for the central office or eventual associates. MDS has now become a training ground and is positioned as a leading expert of sorts for how to do discipleship correspondence, not only by mail but also online as interest has grown organically and now exponentially. Always the goal: increase impact.

This mode of growth has been similar for the Accounting Department as they propel off our integral practice of working with national partners around the world and historic donors locally, but now with technology that broadens access, increases efficiency/accuracy, and decreases waste. Whether it be the standard accounting system, new donor management software, or the development of a robust staff portal for support and project accounts, all have exponentially revolutionized to whom and how information is almost

instantly available, while new digital means ease the physical effort and material expended to process and track the finances needed to keep the ministry functional, sustainable, and safe. From this solid standing, our staff remains ready to serve and grow with God's plan for SLM.

For the Operations Department, the legacy might remind one of when Jesus took a little lunch and made it a basket banquet. From the original upstairs space downtown to a multi-building and multi-residence landscape, God has done great things with "a few" for our facilities. Both in the past and just recently, volunteers donated not money, but their ability. With staff assistance, they drew up electrical plans, while a different skilled crew at their own expense came to install. Maintenance staff at Source of Light have become known for multiplying the value of scrap, whether it be turning old junk into replacement parts or whole buildings into storage sheds. Countless hours and skills have been given by grace to be made into something big by God.

Much of this labor bears fruit in the Publications Department, where we have done our best with what we have and by faith, only and until the Lord provides the means for improvement. Paper, first inventoried on paper up through introducing computers, then toward a more complex item/order database. Whether it be developing film replaced by computer-to-plate

prepress, or the progression from a tabletop mimeograph to single-color then two-color lessons printed on the Color King, to the future and a four-color press with better automation, God provides. Staff is often just enough, even as we expand, such as when the unspoken language of Braille entered our literature vision from another ministry, which has continued faithfully and doubled in the number of students since its addition. We do what needs to be done and get the Word where it needs to go.

Hebrews 11:9-10 comes to mind, where we join in hope with Abraham who was looking forward to and had a greater vision for what God might have. Yet we also do so firmly and expectantly at Source of Light, with no question that we have "foundations, whose builder and maker is God."



Bruce Dare serves as the newly appointed Director of Publications at SLM. He and his family are grateful God opened this place of ministry full-time in 2021.

70 YEARS OF VOLUNTEERS

By Kimberly Thigpen

In 1952, before Source of Light had an official name, two men brought a typewriter to the home of a 15-year-old girl named Mary. They set up a small office on her porch, and Mary learned to "hunt and peck" the keys to type response cards for the newly born, rapidly expanding ministry.

Thus, SLM's need for and provision of volunteer help began, and has not ceased for seven decades. Currently, SLM has 130 missionaries and 524 full-time volunteers worldwide, an astonishing ratio that does not include thousands more part-time and one-time volunteers. This year, SLM expects to surpass 20,000 volunteer hours logged, saving the ministry hundreds of thousands of dollars in labor.

From the early years until now, God's people, alone or in groups small to large, have sorted files, stuffed envelopes, and shredded documents. They have built and fixed equipment, boxed and shipped lessons, and encouraged weary missionaries.

Church groups from Alabama to Pennsylvania come year after year. A doctor once visited and offered his services to the missionaries for free. Today, a local chiropractor does the same. Campers set up to offer summers. Some end up staying long term.

Missionary retirees from fields around the world come here to continue to serve. Others retired from secular business use their retirement funds and their business experience, not to vacation or travel, but to spread the Gospel.

Schoolchildren help organize dusty archive lessons created before their parents were born. A blind woman preps Braille materials for shipping. An online group, made up of volunteers around the country, edit new courses.

Service groups have torn down old buildings and constructed new ones, remodeled missionary houses, and made the grounds beautiful.

In recent years, volunteers have offered discounted legal help or computer expertise. Some have traveled to SLM foreign fields to serve.

Only God knows the total number of volunteers who have impacted and helped sustain the ministry of SLM for 70 years, but the souls that unknown number represents, the gifts that they brought and the gifts that they are, are eternal treasures, precious to the SLM family, priceless to God.

What Our Volunteers Say:

◆ I love to go because of the group working together to help a mission with their needs. It's a way of moving missions from the head to the heart.

◆ We love to go because after serving there for 14 years, SLM folks are still family to us. It's like going "home" each year for a visit. To be able to help save SLM money and time that could be spent on getting the lessons/Gospel out, it's something you can't put a price tag on.

◆ I enjoyed every minute working with people devoted to the Lord. My spiritual beliefs were greatly lifted.

Betty Ingalsbe Remembers:

Morris and Mary Esther Messmore were farmers. When the doctor told Morris he needed to get out of the Indiana winters, they headed to Florida. Used to being busy on the farm, they found themselves with too much idle time. When we learned they were not satisfied there, we encouraged them to come check out Source of Light. It didn't take long for them to realize this is where they should be. Morris worked in maintenance and Mary Esther worked in the Madison School grading prisoner Bible lessons. They served from 1982 till 1992. Both were a great asset to SLM.



*Learning how to use SLM's first computers.
— Photo by SLM archives*

Dave Newell Remembers:

The 1996 Olympics came to Atlanta, Georgia, just a few miles to the west of Madison. SLM planned an International Field Conference to coincide with the Olympic events. Three couples from Anna Gay Newell's home church in West Virginia volunteered to prepare and cook meals during the field conference, freeing SLM Home Office staff to handle event logistics. They were a blessing as they spent long hours in the kitchen each day!

Branch directors and representatives came to Madison for the conference, and many stayed to share the Gospel in their language with people who came to the Olympics from many countries. The mission field came to us!

Ray Walker Remembers:

Julia and Bill Scifres were members of Colonial Hills Baptist Church in East Point, Georgia. A group of ladies

from the church would come down once a month and help this struggling mission as we barely had sufficient staff to keep everything going. I was a struggling young administrator with the desperate need for a secretary. Julia would take dictation to help me get caught up with my correspondence. She would not tell me how to phrase something, but she would tell me, "Let's not say it like that." So, she would make me re-state it in my own words. She did this over several months, helping me with vital correspondence, and helping to guide me for future ministry.

Phil Winder Remembers:

My son, Dan, met his wife Leah here. Leah was on a mission trip with her church from Indiana. They were both in the tenth grade. They dated long distance through high school and Leah's college years and were married seven years after they started dating.

Many of our staff began their ministry with Source of Light as volunteers.

Mary Eaton Remembers:

One summer [1953] I volunteered at the mission when they were downtown. Charles and Betty Gilmore would take us [girl workers] home for lunch, and they would take a can of tuna fish and some mushroom soup and she'd make a meal out of that. They were so generous with what they had. That was a good summer. Joyce Dix gave



Typesetting 1977 — Photo by SLM archives

me a check for three dollars. I still have that check.

Ron Barnes Remembers:

Martha of "Martha's Cottage" may be one of the first volunteers of SLM. She came from Second Baptist Church of Auburn. She heard that balancing kids and the ministry at SLM had its challenges so she moved to SLM to volunteer to babysit the missionary kids who needed watching while parents worked. That was what her cottage was built for. She babysat my mom.



Kimberly Rae Thigpen is Source of Light's Literature Coordinator and homeschool mom of two great kids.

THE NEXT 70 YEARS AND YOU

By Kimberly Thigpen

Source of Light is not slowing down! We're expanding into new fields, creating new material, updating technology, and working to remain innovative, relevant, and effective in a rapidly changing culture.

The world is changing, but the need for the Gospel is the same, as is the command to go and make disciples.

So, do you have some time next week, next month, next year to help fill that need and fulfill that command? Has God gifted you with specific skills, time, resources, or just good old-fashioned willingness? Has God placed a burden in you for a certain place or people group, or just the lost anywhere?

We invite you to join us! Whether you have a day or a month or years to offer, whether you're an individual or want to bring a group, you can make a difference here at Source of Light. Source of Light is not slowing down! We're expanding into new fields, creating new material, updating technology, and working to remain innovative, relevant, and effective in a rapidly changing culture.

The world is changing, but the need for the Gospel is the same, as is the command to go and make disciples.

Source of Light Needs . . .

OPERATIONS DEPARTMENT

(CONTACT PHIL WINDER AT
PWINDER@SLMIN.ORG)

Volunteer or Career

HVAC service and repair

To perform service when needed as well as preventive maintenance.

Housekeeping/Cleaning

To do housekeeping, laundry, and cleaning for our guest houses.

Janitorial/Maintenance

To assist our janitorial staff in cleaning, preventive maintenance, safety inspections, setting up for events, etc.

Landscaping

To maintain our 25-acre campus mowing, trimming, blowing, edging, etc.

PUBLICATIONS DEPARTMENT

(CONTACT BRUCE DARE AT
BDARE@SLMIN.ORG)

Volunteer or Career

Shipping Specialist

General assistance in warehouse; picking/packing items for shipment.

Orders Clerk

Data entry, answering inquiries, making invoices, processing payments.

Pressman Apprentice

Train/assist in running and maintaining printing presses and finishing equipment.

Braille Assistant

Train/assist in producing and packaging materials for Braille discipleship ministry.

GLOBAL OUTREACH DEPARTMENT (CONTACT RON BARNES AT HR@SLMIN.ORG)

Career

Regional Administrator

A full-time missionary with cross-cultural ministry experience is needed to oversee international regional branches. Vision casting, shepherding, field visits, partner development, organization, and accountability are essential qualities.

Administrative Assistant

Full-time or part-time office administrators are needed to assist Regional Administrators or the Training Department with reports, communications, encouragement, and office administration.

Training Coordinator

Full-time coordinator of global training opportunities. Connecting global branches with skilled teachers and preachers for crusades, conferences, college and seminary courses, and missionary training.

Volunteer

Computer Formatting and Design

Experience with InDesign, help convert older international courses into usable files. Can volunteer remotely.

FINANCE DEPARTMENT (CONTACT BRIAN THIGPEN AT BTHIGPEN@SLMIN.ORG)

Volunteer or Career

Finance Office Staff

Bookkeeping and filing tasks for various transactions in support of our international ministries.

Accountant

Banking, bookkeeping, and facilitation of financial activities in support of our international ministries.

MADISON DISCIPLESHIP SCHOOL (CONTACT BRIAN THOMPSON AT BTHOMPSON@SLMIN.ORG)

Volunteer or Career

Spanish Coordinator

Bilingual (English, Spanish) and can work in the office for 25-40 hours a week. Grading, recording, and discipleship for our Spanish-speaking students. Person needs to be spiritually mature and ready for the responsibility of encouraging and helping new and growing Christians.

Prison Coordinator

Discipling prisoners. Grading, corresponding to students' needs, helping keep track of the facilities that our students are in. We need a person willing to talk with DOC officials and facility workers to arrange agreements to see our lessons abide by restrictions in order for the students to faithfully get their lessons.

ADMINISTRATIVE DEPARTMENT

(CONTACT RON BARNES AT
HR@SLMIN.ORG)

Administrative Assistants

Full-time or part-time office administrators are needed to assist senior administration with organization, communication, reports, and office administration. Abilities and experience in HR, PR, Finance, or Distribution would be helpful, but not necessary.



Kimberly Rae Thigpen is Source of Light's Literature Coordinator and homeschool mom of two great kids.

PRAYER

◆ Many of our Branches have only a few people on their mailing lists. That means that not many people are praying with them concerning challenges and rejoicing with them over victories. It also means, in many instances, that they have few donors. Please pray that God will bring new people who will embrace these ministries and give them the support that they need – prayer support, encouragement, and financial support.

◆ Sika Yawo's ministry in Togo, West Africa, has an orphanage, called "The Joseph's Project." It is a great financial burden on his ministry to care for all the needs of the orphans – food, clothing, medical, and schooling. He is praying that God will help him to find families who will adopt the children. Please pray with Sika that God will enable him to find homes for the children.

◆ Pastor "H" in India has been using a model of the Old Testament Tabernacle as a means of sharing the Gospel. They travel with the Tabernacle to a location, set it up, and then people are invited to tour the Tabernacle and listen to a presentation which includes the Gospel. This unique project has been used of God to bring many people to Christ and to enroll many people in the Bible courses. However, due to increasing persecution, it has become dangerous in some places to set up the Tabernacle in open-air public venues. So, Pastor "H" has designed a smaller version that can fit inside a church. This will enable them to be more protected while still being able to reach out with this effective tool. The smaller version is almost finished. Please pray that God will continue to use

Pastor "H's" team and that many more people will come to Christ through this unique method of evangelism.

◆ Because of the tight time frame that they are working with in schools in Kenya, the staff is prevented from using public transport. They rely on motorbikes and a ministry van to get them to the schools in a timely manner to serve. They have wonderful freedom to minister in the schools and are embracing this opportunity. However, most of their motorbikes are older and are costing them hundreds of dollars each month in repairs. For many years, they shared the need for a new ministry van to transport teams to schools. They recently received what they thought they needed, \$9,000, but found that the price of the van had gone up \$6,000 over the long time they were waiting. Please pray that God will help this Branch replace the older motorbikes and get an additional \$6,000 needed for the van so that repair costs do not take up so much of their ministry budget.

◆ Our missionary in Romania needs someone who is skilled in working with technical issues in connection with the website and their online courses. Please pray that God will send them just the right person.

◆ Seven boys came to know Christ in Myanmar. They are facing opposition from their parents and friends. Please pray for them.

PRAISE

◆ One of our Source of Light Branches in India has been targeting a particularly difficult-to-reach people group in their evangelism efforts. They have planned and implemented trainings to prepare Christians with strategies for ministering to this group. Their efforts are paying off and they are beginning to see souls saved from this targeted group.

◆ Jorge Vecchiarelli shares that in the Melilla prison in southern Spain, a pastor, his wife, and a church leader share the Gospel every week with the inmates. They see inmates receiving the Lord, and sharing, during family visits, the message with their children.

◆ We praise the Lord for the opportunity that we still have in many schools in Africa to use the Bible lessons.

◆ Isaiah Bernasko is praising the Lord for \$30,000 that has been received in the Ivory Coast for the orphanage work at Abbeykro.

◆ Pastor "H" in India shared that over 1,000 People visited the Tabernacle exhibit at one of the sites where it was erected. People trusted the Lord and will receive follow-up by the pastor who organized the event.

◆ SLM missionary "K" shares that in a sensitive area of India, a new work was started in a village of 1,130 people. An evangelistic meeting was held, and God touched the hearts of 35 people. They will be baptized soon.

◆ In the North Zone of India, missionary "S" recently reported that 30 new villages were reached with the Gospel, 60 Bibles were distributed, and eight new fellowship groups were started.

◆ We are praising the Lord that there is "light at the end of the tunnel" regarding

getting a lesson shipment to West Africa. The presses are churning out lessons to fill last-minute orders before the container is shipped. Please pray that God will expedite this shipment. Our staff in West Africa has been impacted by the shipping crisis for some time and are needing materials.

◆ The heat has been very extreme in India this year. One of our Branch offices was not air conditioned making work difficult. We praise the Lord for providing an air conditioner for this office.

◆ The SLM Philippines Branch celebrated their 42nd Anniversary. They had 77 people in attendance which included Discipleship Training Branch pastors, missionaries, students, and visitors.

◆ Sika Yawo, in Togo, West Africa, praises the Lord for the provision of school supplies, school fees, and the general needs of the orphans in the Joseph Project orphanage.

◆ Enrique Machado, SLM National Director in Peru, praises the Lord for an opportunity he had to visit two regions of Peru to make new contacts and present the ministry of Source of Light.

◆ James Byakika praises the Lord for all the donations that made it possible to purchase a ministry vehicle for the work he directs in Uganda.

◆ One of our national missionaries in India is praising the Lord for three believers who have agreed to run Associate Discipleship Schools in their homes. This missionary was also given the opportunity to introduce the Source of Light Bible lessons at a pastors' fellowship. After the meeting, many of the pastors came forward expressing an interest in using the lessons in their churches.

FIELD GIFT FUND



The Field Gift Fund is set aside for the emergency needs of the Source of Light fields and missionaries. The fund seeks out the fields of which have little to no income, and provides enough money for them to get by with. It also provides a “safety net” for these fields in case of emergencies, natural disasters or unexpected health issues. It has been a source of hope and encouragement to the fields on many occasions.

Would you prayerfully consider partnering with SLM through this Field Outreach Fund Campaign? There are many ways to help.

To partner with us today, go to
sourcelight.org/donate

IN MEMORIAL



Source of light
INTERNATIONAL

GIFTS IN HONOR OF...

Byron and Sheila Shupp by

Gary and Joanne Silverman

Dave and Allene Giles by

Stacy and Lynn Barnes

Hugh and LaVon Jarrell by

Robert and Martha Williams

Bill and Marianne Rosenberger by

Allan and Sue Reichenbach

Charlotte Mattocks by

Allan and Sue Reichenbach

Bobby Tahaei by

Jeanne Barnes

GIFTS IN MEMORY OF...

Spencer Bradley by

Jerry and Melinda Spivey, Jr.

Herb Pollard by

Sylvia Pollard

Patricia Wood by

Paula Ghorley
Marty Hills
Penney Mitchell

Myron Mattocks by

Allan and Sue Reichenbach

Marguerite Potter by

Lillian Knowles
Nancy Nydam

Dear Friend,

Let's remember His words...

Lay not up for yourselves treasure on earth...but lay up for yourselves treasure in heaven...for where your treasure is, there will your heart be also. (Paraphrase Matthew 6:19–21)

...for in heaven we will be glad we did.

Yours for the harvest,

Dr. Ronald J. Barnes, Jr.
President & CEO

Give Online at:

sourcelight.org/donate

By Phone:

706.342.0397

Each gift will be used as preferred with the understanding that when any need is met, the remaining gifts will be used where most needed. Gifts are acknowledged and receipted with an official receipt for income tax purposes.

We are grateful to you for being a part of the ministry of Source of Light through your prayers and financial support.



Source of light
INTERNATIONAL

1011 Mission Road
Madison, GA 30650-4908

p. 706.342.0397

f. 706.342.9072

e. slm@sourcecelight.org

Nonprofit
Organization
U.S. POSTAGE
PAID
Permit No. 33
MADISON, GA



Current Resident or